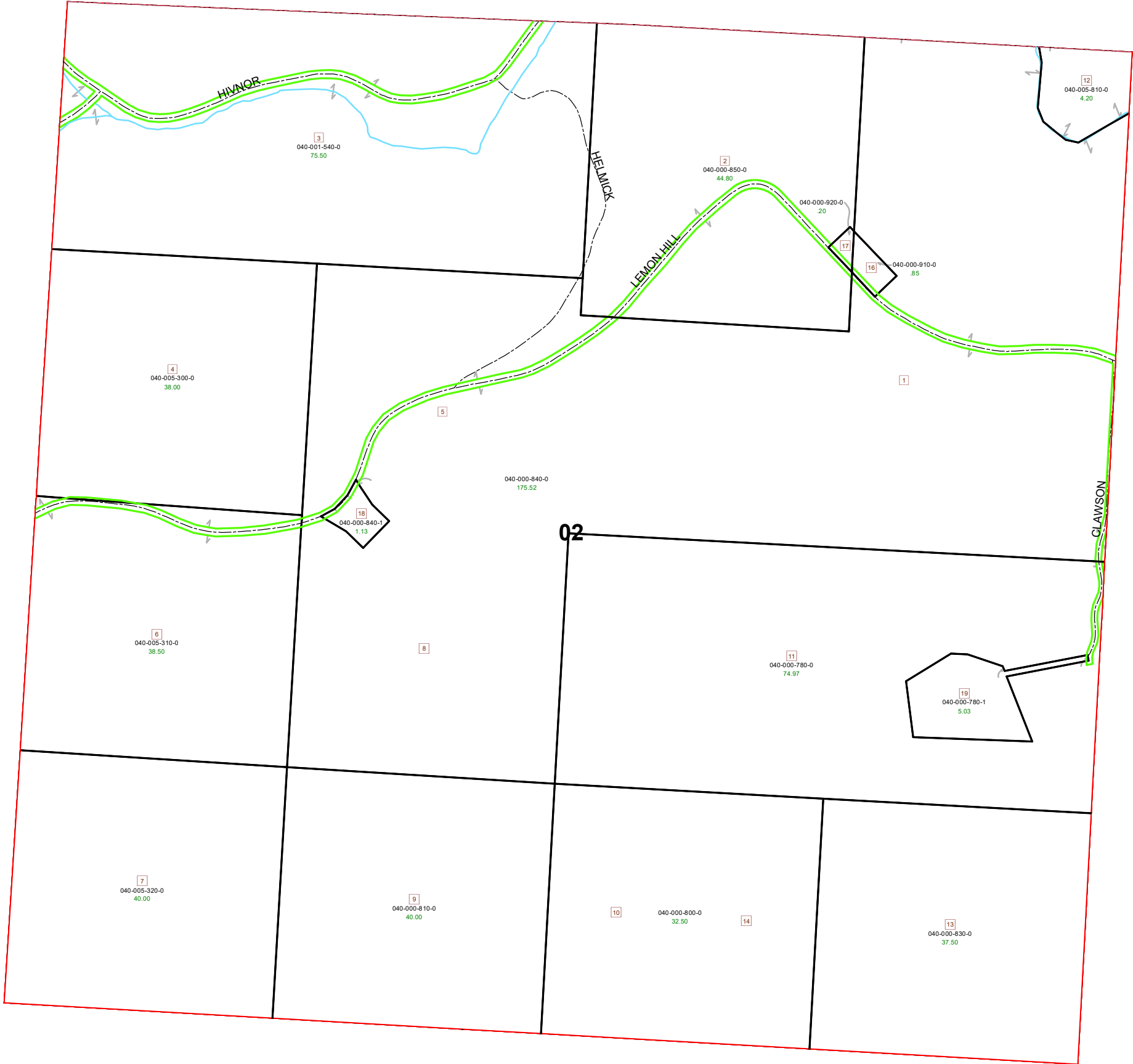
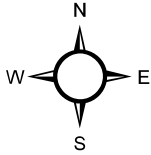


# DEERFIELD TOWNSHIP SECTION 02 R13- TWP 9 MORGAN COUNTY, OH



PIN	VOL	PAGE	Owner	LegalDescr	Acres
040-000-840-1	OR229	3251	CLAWSON DANA L & FRANCES M	R13 T09 S02 SD 18 SU	1.13
040-000-910-0	D.V 114	454	CLIFTON LYLE FREDERICK JR & KATHY JEAN	R13 T09 S02 SD 16 EX	0.85
040-000-920-0	D.V 114	454	CLIFTON LYLE FREDERICK JR & KATHY JEAN	R13 T09 S02 SD 17 EX	0.2
040-001-540-0	OR181	751	FRALEY THOMAS & RUTH A	R13 T09 S02 SD 3	75.5
040-005-320-0	OR213	2268	LAUER DAVID W & KATHERINE A TRUSTEE	R13 T09 S02 SD 7	40
040-005-310-0	OR213	2268	LAUER DAVID W & KATHERINE A TRUSTEE	R13 T09 S02 SD 6	38.5
040-000-780-1	OR72	242	MAYS THOMAS A & CAROLYN	R13 T09 S02 SD 19 EX	5.027
040-000-830-0	OR54	151	MUETZEL ROBERT N JOHN R & THOMAS C	R13 T09 S02 SD 13 @	37.5
040-000-800-0	OR54	151	MUETZEL ROBERT N JOHN R & THOMAS C	R13 T09 S02 SD 10-14	32.5
040-000-810-0	OR54	151	MUETZEL ROBERT N JOHN R & THOMAS C	R13 T09 S02 SD 9 @ U	40
040-000-780-0	OR54	151	MUETZEL ROBERT N JOHN R & THOMAS C	R13 T09 S02 SD 11 EX	74.973
040-000-840-0	OR234	1467	SMITH FAMILY ACRES AN OHIO LIMITED LIABILITY C	R13 T09 S02 SD 1-5-8	175.52
040-000-850-0	OR234	1467	SMITH FAMILY ACRES AN OHIO LIMITED LIABILITY C	R13 T09 S02 SD 2 EX C	44.8
040-005-300-0	OR233	802	SMITH WILLIAM E	R13 T09 S02 SD 4 SUR	38
040-005-810-0	OR229	1658	THE RUTHERFORD IRREVOCABLE HERITAGE TRUST	R13 T09 S02 SD 12 EX	4.199



**Boundaries**

- Future Split (dashed pink line)
- Parcel (solid black line)
- Hydro (blue line)
- ROW (green line)
- County (dashed grey line)
- Lot (yellow line)
- Section (red line)
- Township (dashed red line)
- Symbols (grey line)
- Parcels (black outline)
- Roads (dashed black line)

